



The **LumiTrail** by **LumiAir**, designed to quickly have a lighting system energy efficient, powerful with high performance (from 2000 to 12000 m<sup>2</sup> lit), easily towable, works in complete autonomy.

The system, installed on a towable trailer, consists of a self-inflating lighting balloon, a generator and a removable telescopic mast with manual winch. The 4000W model can also be optionally equipped with a pneumatic telescopic mast and an air compressor to power it. The generator set can be optionally equipped with a large tank.

This lighting package, uniformly diffuse light 360° omnidirectionally, glare-free and without drop shadow. It is ideal for night activities requiring an excellent level of illumination of the entire area. The **LumiTrail** can replace several conventional projectors of the same power.

Placed at a height of 4m to 6m, the discharge lamp provides high light output; its 6000K color temperature (close to that of the sun) allows easy work and perfect color rendering. The anti-vibration pads and the internal inflation and cooling air flow help protect the lamp and increase its lifetime.

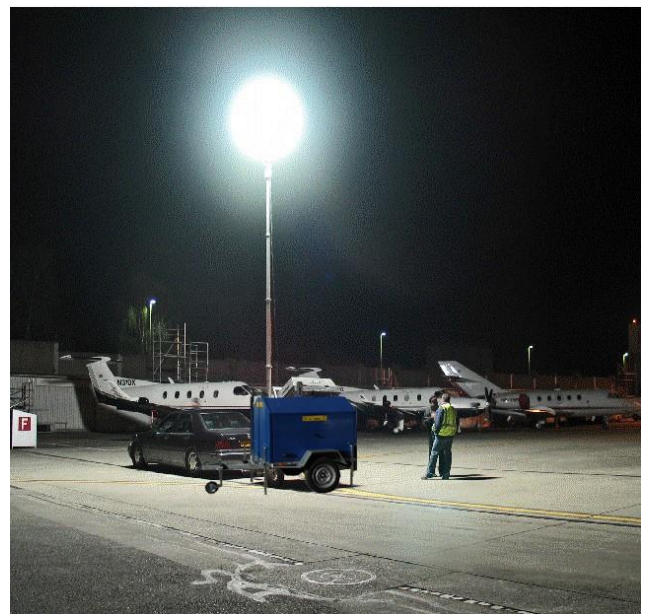
The commissioning of the **LumiTrail** by **LumiAir** takes only a few minutes. The integration has been designed to allow easy handling and use by one person. The quality of the light and the robustness of the whole make it a tool adapted to all the uses where the surface to be lit is important and the installation speed is an essential element.

Model	Lamp	Illuminated area	Mast	Generator electric start	Autonomy
LTA 4000	4000W Discharge	> 12000 m <sup>2</sup>	Manual winch 4 m	DIESEL 10 KVA	> 10h
LTA 4000G	4000W Discharge	> 12000 m <sup>2</sup>	Manual winch 6 m	DIESEL 10 KVA	> 25h
LTA 2500	2500W Discharge	> 7500 m <sup>2</sup>	Manual winch 4 m	DIESEL 6 KVA	> 10h
LTA 1200	1200W Discharge	> 4000 m <sup>2</sup>	Manual winch 4 m	DIESEL 4 KVA	> 10h
LTH 2000D	2000W Halogène	> 2000 m <sup>2</sup>	Manual winch 4 m	DIESEL 4 KVA	> 10h

Other models or finishes: consult us



LumiTrail 4000 in construction



LumiTrail 4000 – Airport working site



**LumiAir - An Innovative Company:** International patents, 3 Gold Medals at the Geneva Inventions Fair and 2 European Oscars for Lighting Innovation. LumiAir is certified ISO 9001 - 2015. The products for the lighting of potentially explosive areas are certified ATEX by INERIS laboratories and the products intended for the transport of persons by cable are certified by the STRM. LumiAir also develops and manufactures electronic products for the safety and installation control of mechanical lifts and large industrial systems.